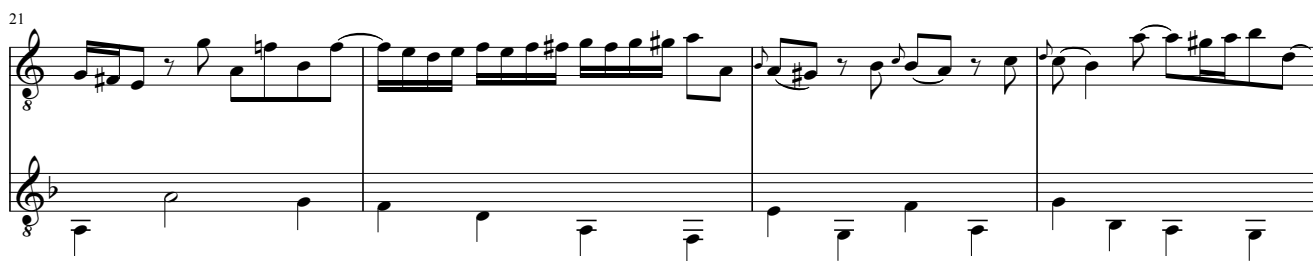


# Canon (in Hypodiatessaron)

per Augmentationem in Contrario Motu

J. S. Bach



25

System 1, measures 25-28. The treble staff contains a melodic line with eighth and sixteenth notes, including slurs and ties. The bass staff provides a harmonic accompaniment with eighth and sixteenth notes, some beamed together.

29

System 2, measures 29-32. The treble staff continues the melodic line with more complex rhythmic patterns. The bass staff has a more active accompaniment with eighth notes and rests.

32

System 3, measures 32-35. The treble staff features a dense melodic passage with many sixteenth notes. The bass staff has a steady accompaniment of eighth notes.

36

System 4, measures 36-39. The treble staff shows a melodic line with some rests and slurs. The bass staff has a more complex accompaniment with eighth and sixteenth notes.

40

System 5, measures 40-43. The treble staff contains a melodic line with slurs and ties. The bass staff provides a harmonic accompaniment with eighth and sixteenth notes.

44

Measures 44-47 of a musical score. The system consists of two staves. The upper staff is in treble clef with a key signature of one flat (B-flat) and a common time signature. It contains eighth and sixteenth notes, some beamed together, and a half note. The lower staff is in bass clef with a key signature of one flat and a common time signature. It contains eighth and sixteenth notes, some beamed together, and a half note. The music is in a 4/4 time signature.

48

Measures 48-51 of a musical score. The system consists of two staves. The upper staff is in treble clef with a key signature of one flat and a common time signature. It contains eighth and sixteenth notes, some beamed together, and a half note. The lower staff is in bass clef with a key signature of one flat and a common time signature. It contains eighth and sixteenth notes, some beamed together, and a half note. The music is in a 4/4 time signature.

52

Measures 52-56 of a musical score. The system consists of two staves. The upper staff is in treble clef with a key signature of one flat and a common time signature. It contains eighth and sixteenth notes, some beamed together, and a half note. The lower staff is in bass clef with a key signature of one flat and a common time signature. It contains eighth and sixteenth notes, some beamed together, and a half note. The music is in a 4/4 time signature.

57

Measures 57-61 of a musical score. The system consists of two staves. The upper staff is in treble clef with a key signature of one flat and a common time signature. It contains eighth and sixteenth notes, some beamed together, and a half note. The lower staff is in bass clef with a key signature of one flat and a common time signature. It contains eighth and sixteenth notes, some beamed together, and a half note. The music is in a 4/4 time signature.

62

Measures 62-65 of a musical score. The system consists of two staves. The upper staff is in treble clef with a key signature of one flat and a common time signature. It contains eighth and sixteenth notes, some beamed together, and a half note. The lower staff is in bass clef with a key signature of one flat and a common time signature. It contains eighth and sixteenth notes, some beamed together, and a half note. The music is in a 4/4 time signature.

67

Measures 67-70 of a musical score. The key signature has one flat (B-flat). The melody in the treble clef consists of quarter and eighth notes. The bass line features a complex pattern of eighth and sixteenth notes, including some beamed sixteenth notes.

71

Measures 71-74 of a musical score. The key signature has one flat. The melody continues with quarter and eighth notes. The bass line is highly rhythmic, featuring many beamed sixteenth and thirty-second notes.

75

Measures 75-79 of a musical score. The key signature has one flat. The melody includes some half notes and quarter notes. The bass line continues with intricate sixteenth-note patterns.

80

Measures 80-82 of a musical score. The key signature has one flat. The melody has a brief rest in measure 81. The bass line remains active with sixteenth-note runs.

83

Measures 83-86 of a musical score. The key signature has one flat. The melody features some half notes and quarter notes. The bass line continues with dense sixteenth-note patterns.

87

Measures 87-90 of a musical score. The key signature has one flat (B-flat). The melody in the treble clef consists of quarter and eighth notes with various accidentals. The bass line features a complex pattern of eighth and sixteenth notes, including triplets and ties.

91

Measures 91-94. The melody continues with quarter notes and rests. The bass line has a dense texture with many sixteenth and thirty-second notes, including triplets and ties.

95

Measures 95-98. The melody features a series of beamed eighth notes and quarter notes. The bass line continues with intricate sixteenth and thirty-second note patterns.

99

Measures 99-102. The melody includes some half notes and quarter notes. The bass line remains highly active with sixteenth and thirty-second notes.

103

Measures 103-105. The melody has a more spacious feel with some half notes and quarter notes. The bass line continues its complex rhythmic pattern.

106

Measures 106-109. The melody concludes with a half note and a whole note. The bass line ends with a series of sixteenth notes and a final whole note.