

'CELLO SUITE Nº 3

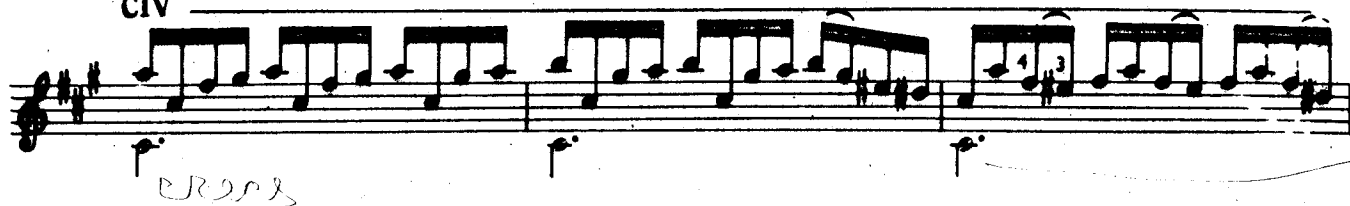
Arranged for Guitar
by JOHN W. DUARTE

J. S. BACH

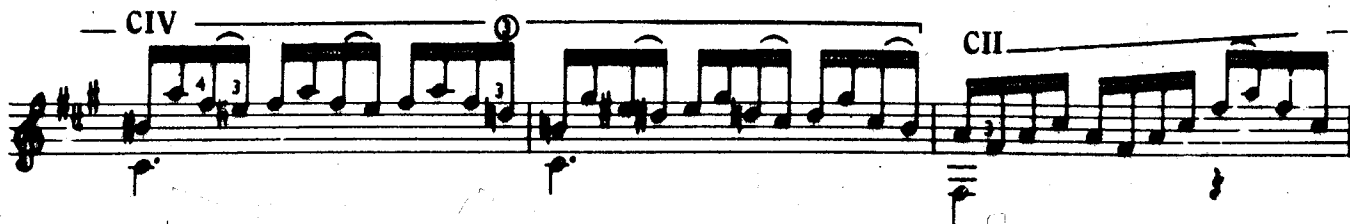
I. Prelude

© 1965 by Schott & Co. Ltd., London.

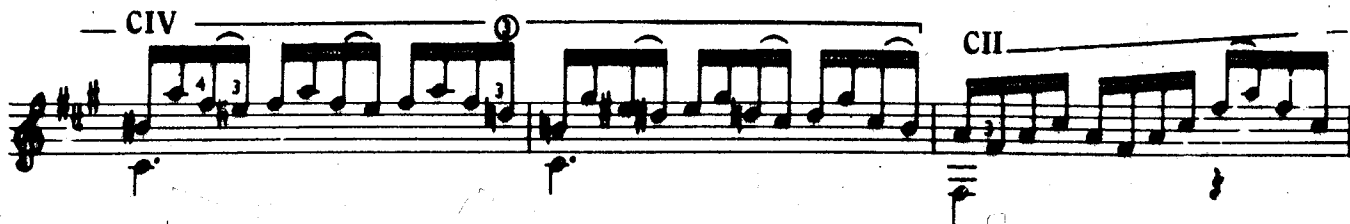
CIV



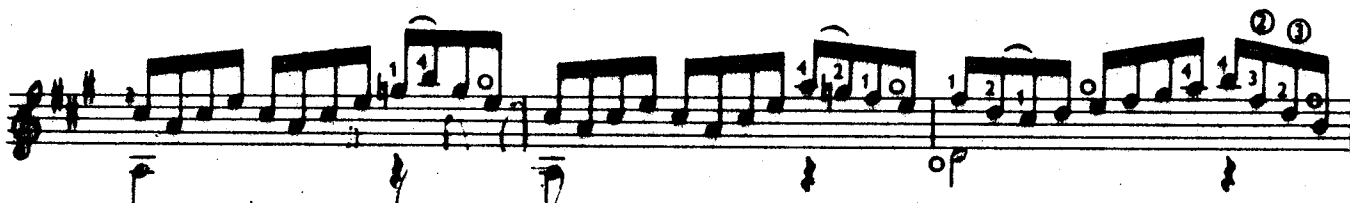
CIV



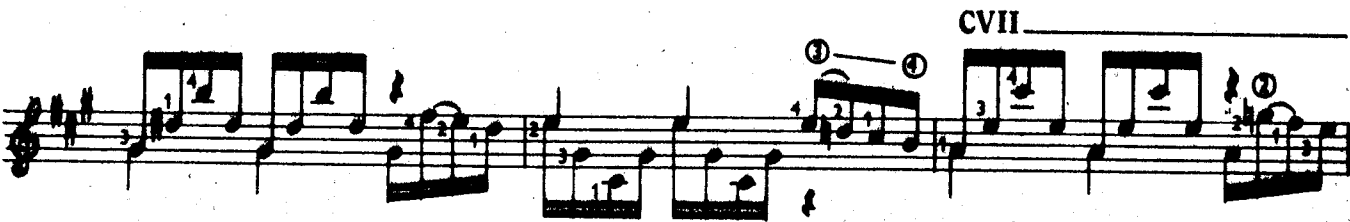
CII



CII



CVII



CVII

CVII

CVII

CVII.

CVII

CII

CII

The musical notation for the chorus is written on a single staff in treble clef with a key signature of two sharps (F# and C#). The melody is primarily composed of eighth and sixteenth notes, often beamed together. There are four numbered circles (1, 2, 3, 4) indicating specific notes or groups of notes. The word "Chorus" is written above the staff. The notation includes various musical symbols such as beams, slurs, and accidentals.

